

# Poster Title: Integrating Network Digital Twin (NDTs) into Future AI-based 6G Systems



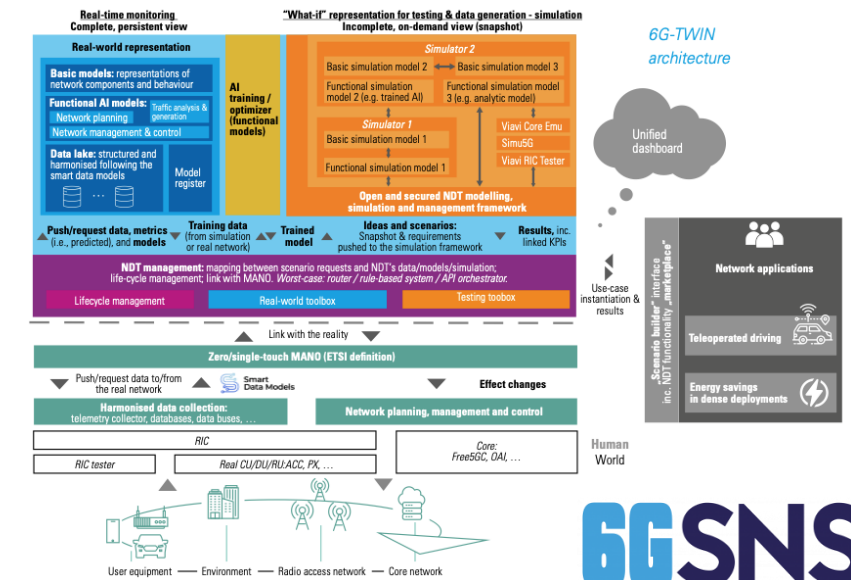
## Poster Overview:

- 6G networks are complex, dynamic, and distributed
- NDTs simulate, predict, and optimise performance
- AI-native, multi-layered architecture integrates edge, fog, cloud, and diverse technologies
- Real-time data, simulation, and AI feedback enable scalable, cost-efficient networks

## What you will learn:

- How NDTs connect real networks with virtual simulations
- Federated AI-native 6G architecture for end-to-end optimisation
- Use cases: teleoperated driving & real-time energy efficiency
- Standards-based approaches for testing, optimisation, and deployment (ETSI NGSI-LD, Smart Data Models, O-RAN, ETSI ZSM, ITU-T Y.3091)

**Presented by**  
**Régis Decorme**  
**R2M Solution France**  
**Horizon SNS JU 6G-TWIN**



**6G SNS**